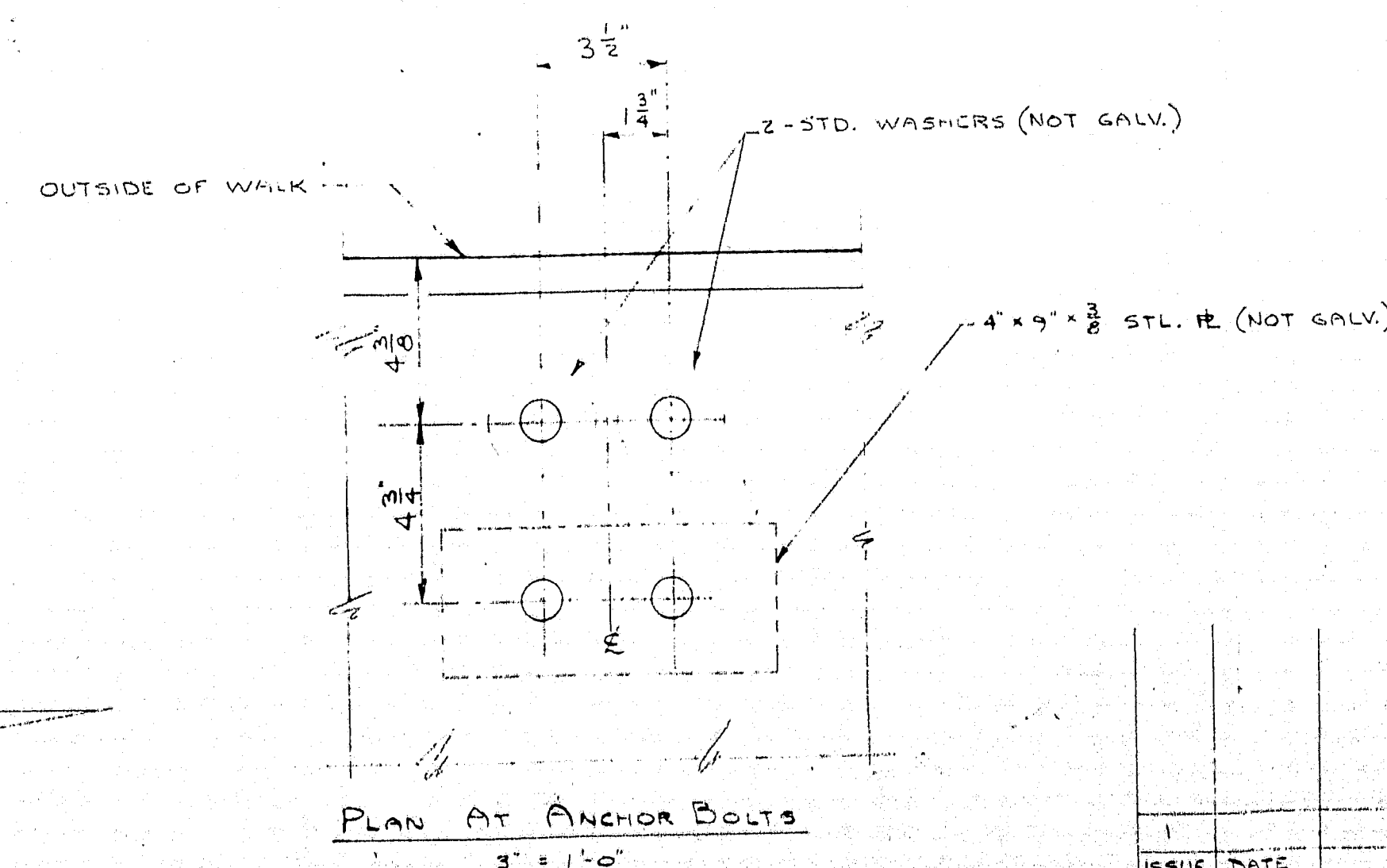
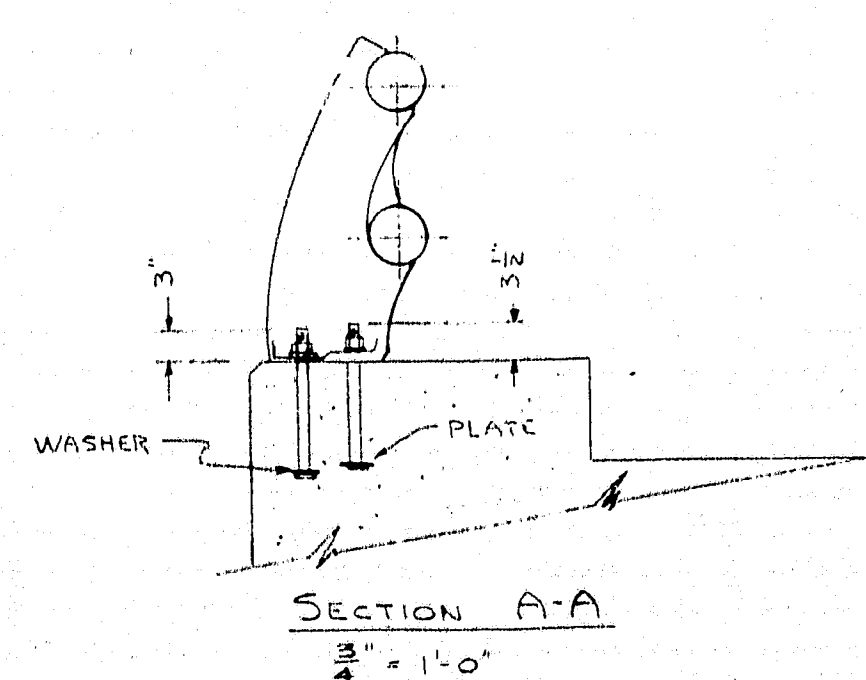
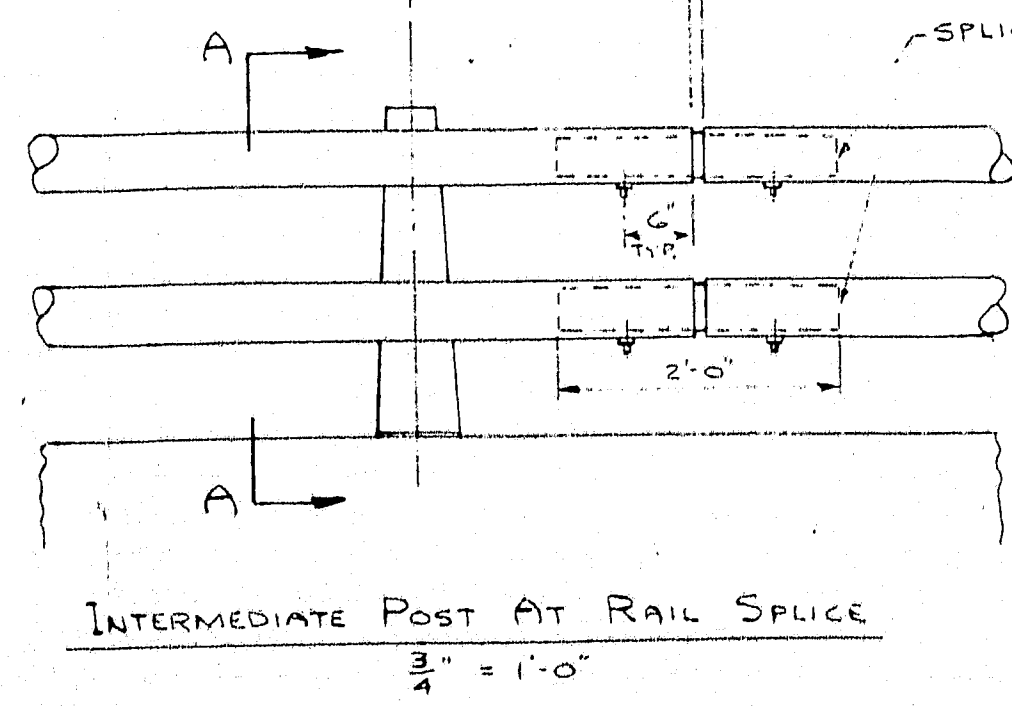
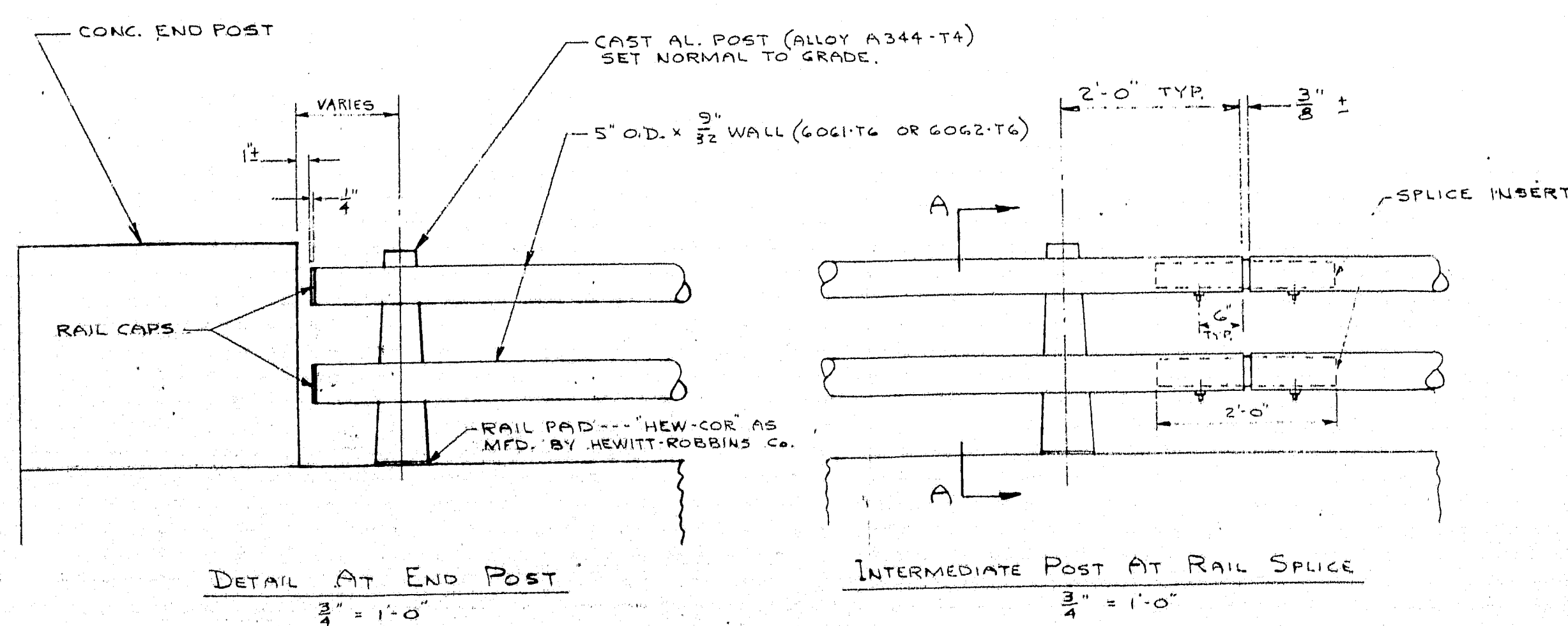


BILL OF MATERIAL			
DWG # ME20-3		WW# 669	
QUAN	MISC. ITEMS	MARK	QUAN. LETH
28	CAST POST (ALLOY A344-T4)	3-1	4 16'-10 3/8"
30	RAIL PAD	3-2	12 28'-11 3/8"
112	1 1/8" x 2 1/2" LG GALV. STUD. W/ 2 PINS AT ONE END & 1 1/2" AT OPP. END	3-3	2 20'-11 3/4"
112	1 1/8" GALV. STL. NUTS	3-4	2 21'-0 1/4"
112	1 1/8" STL. NUTS (NOT GALV.)		
112	1 1/8" GALV. STL. WASHERS		
56	1 1/8" STL. WASHERS (NOT GALV.)		
28	9"x1 1/2" x 3/8" STL. PL. (PAINTED OR GALV.)		
112	1 1/8" FABRIC WASHER		
56	TOGGLE BOLT		
8	RAIL CAP		
16	3/8" - 16 N.C. x 3/4" LG SOCKET-HEAD OVAL POINT SET SCREW (2024-T6)		
16	3/8" - 16 N.C. x 1" LG. SOCKET-HEAD CONE POINT SET SCREW (2024-T4)		
32	3/8" - 16 N.C. AL. JAM NUTS		
16	1 1/8" O.D. x 1/4" WALL x 2'-0" LG. ALUM. SPLICE INSERT		

- GENERAL NOTES —**
- FOR ADDITIONAL DETAILS, SEE MAINE STATE HIGHWAY COMMISSION DWG. # BD 108-64.
 - HOLES IN 5" x 4" TUBE FOR SET SCREWS SHALL BE DRILLED IN FIELD BY ERECTOR.
 - STEEL NUTS, WASHERS & WASHER PL. WHICH ARE EMBEDDED IN CONCRETE, NEED NOT BE GALVANIZED.



113:91

ISSUE	DATE	FOR APPROVAL	DESCRIPTION
1			

CONTRACTOR: GAUCHETTE BROS. INC.
 DR - WJ
 SCALE: AS SHOWN
 BY: CMC-118
 WW# 669
 ME20-3

WARD WELLER COMPANY INC.
 648 HIGHLAND AVENUE
 NEEDHAM HEIGHTS 94, MASSACHUSETTS
 BRIDGE RAILING
 ENGINEERING & ERECTION
 MAINE STATE HIGHWAY COMMISSION
 BRIDGE DIVISION
 FAP# I-95-9(24) 296 TOWN: HOULTON
 INTERSTATE 95 OVER FOXCROFT ROAD
 CONTRACTOR: GAUCHETTE BROS. INC.
 DR - WJ
 SCALE: AS SHOWN
 BY: CMC-118
 WW# 669
 ME20-3